

HARRY CHARLES

Property Specialists



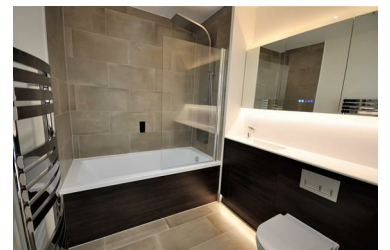
Conway Court, Watford, WD24 5GA

Price £258,000



**** MODERN 5th FLOOR EXECUTIVE APARTMENT - HIGH SPECIFICATION FINISH - COMMUNAL ROOF TERRACE ON THE 7TH FLOOR - LIFT - OPEN PLAN LIVING ROOM/KITCHEN WITH ACCESS TO BALCONY - DOUBLE BEDROOM WITH FITTED WARDROBE - FAMILY BATHROOM - COUNCIL TAX BAND C- NO UPPER CHAIN **** We are delighted to offer for sale this modern 5th floor apartment in this development adjacent to Watford Junction mainline railway station. The property has been finished to a very good standard and has lots of high end fixtures including automated taps. Externally there is a communal roof terrace located on the 7th floor. Please contact us without delay to arrange an early appointment to view to avoid disappointment. Please note that this property does not come with any parking and the photographs show the property before it was let out.

- 5th Floor Executive Apartment
- Living Room
- Double Bedroom With Wardrobe
- Council Tax Band C
- Communal Roof Terrace
- Balcony With Views
- Open Plan Kitchen
- Family Bathroom
- Serviced By A Lift
- No Upper Chain



Additional Information

Location

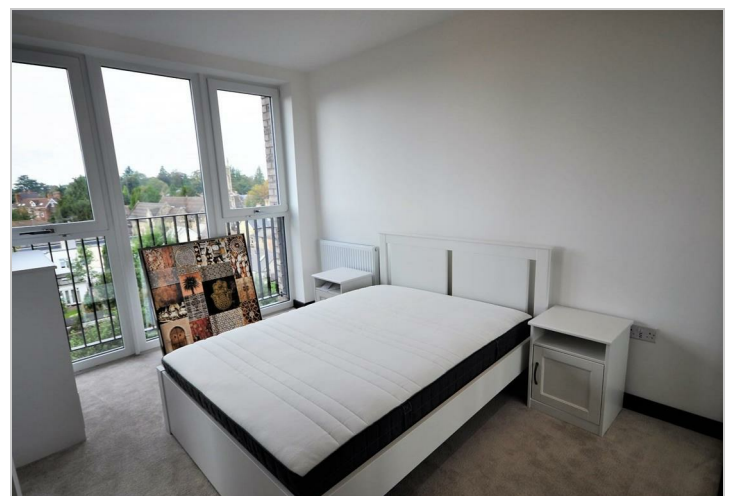
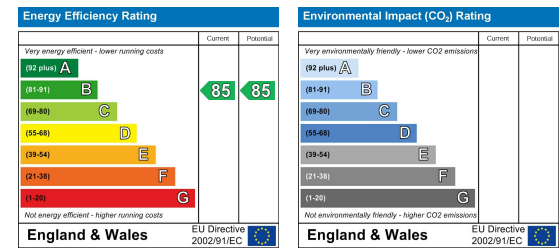
The property is located just off of St Albans Road and is adjacent to Watford Junction Mainline railway station.

PLEASE NOTE THAT THIS PROPERTY DOES NOT COME WITH ANY PARKING.

Area Map



Energy Efficiency Graph



These particulars, whilst believed to be accurate are set out as a general outline only for guidance and do not constitute any part of an offer or contract. Intending purchasers should not rely on them as statements of representation of fact, but must satisfy themselves by inspection or otherwise as to their accuracy. No person in this firm's employment has the authority to make or give any representation or warranty in respect of the property.